

# Monterey County Business Council

Dr. PK Diffenbaugh  
Superintendent of Schools



High reading performance

Average performance of 15-year-olds in reading - extrapolate and apply

Performance distribution in US

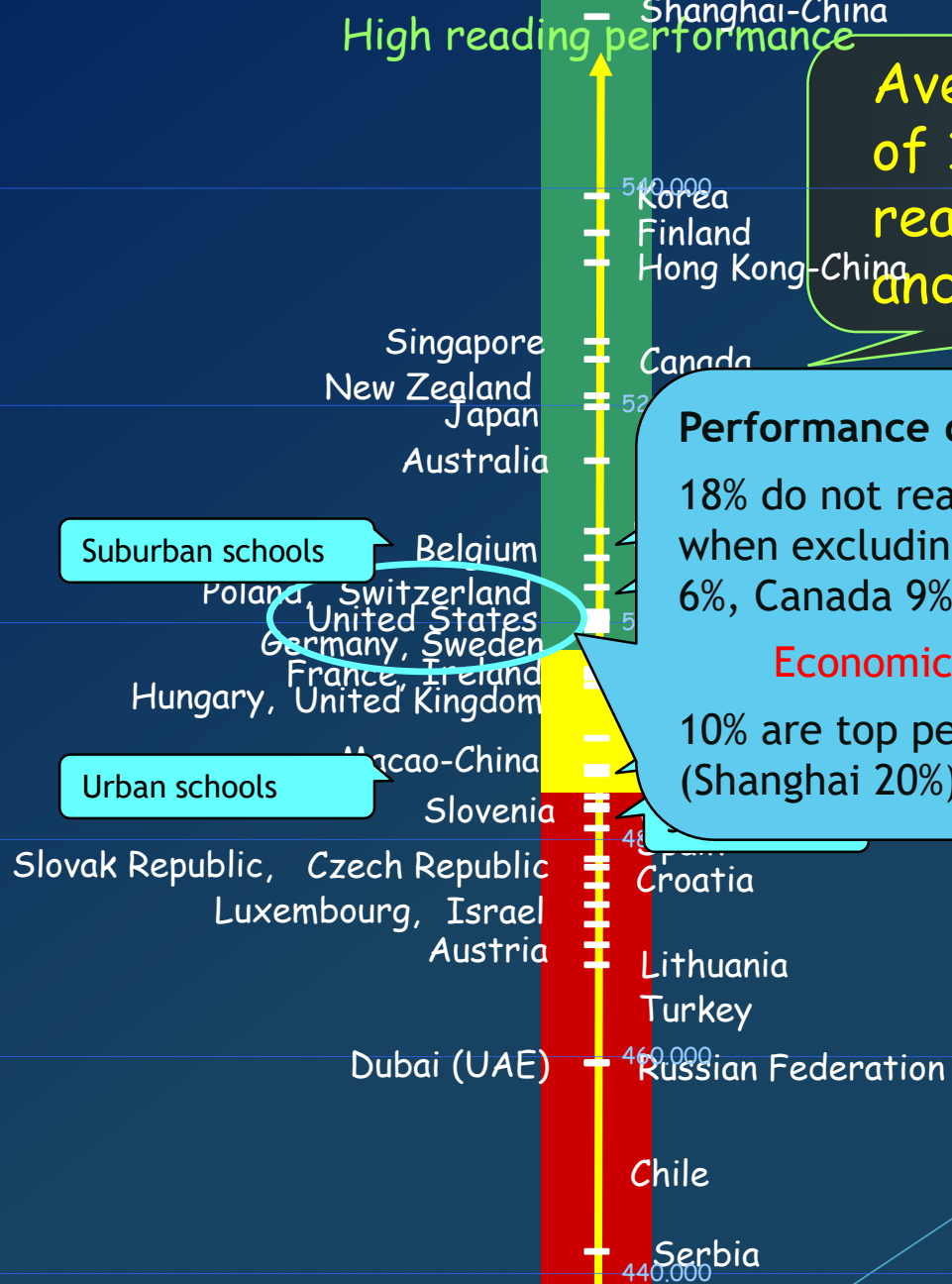
18% do not reach baseline Level 2 (16% when excluding immigrants) (Finland 6%, Canada 9%)

Economic cost: 72 trillion \$

10% are top performers (Shanghai 20%)

Suburban schools

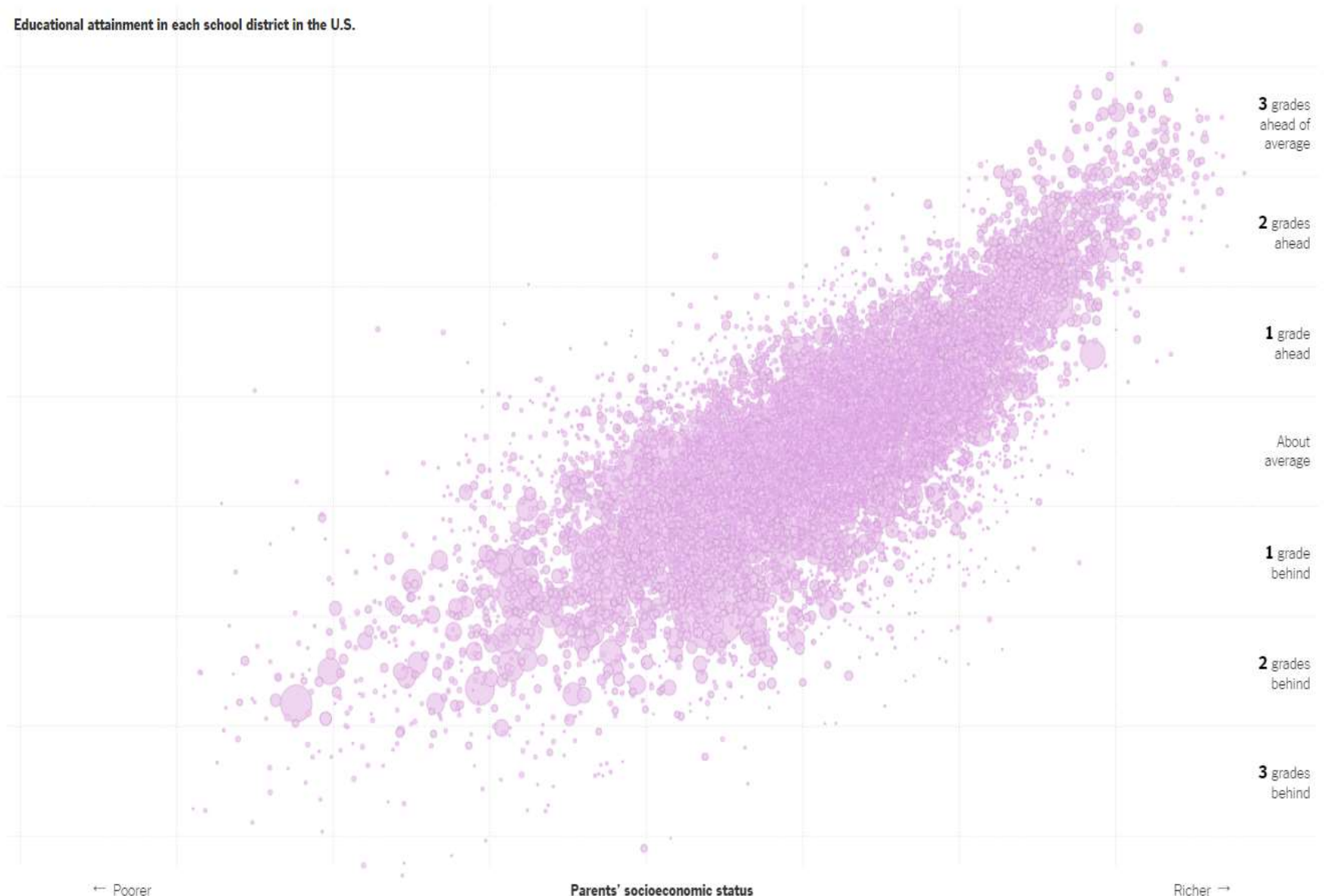
Urban schools



... 17 countries perform below this line

Low reading performance

**Educational attainment in each school district in the U.S.**



Each circle represents one school district. Larger circles represent districts with more students.

There are large gaps between white children and their black and Hispanic classmates. The gaps are largest in places with large economic disparities.

● White students ● Hispanic ● Black

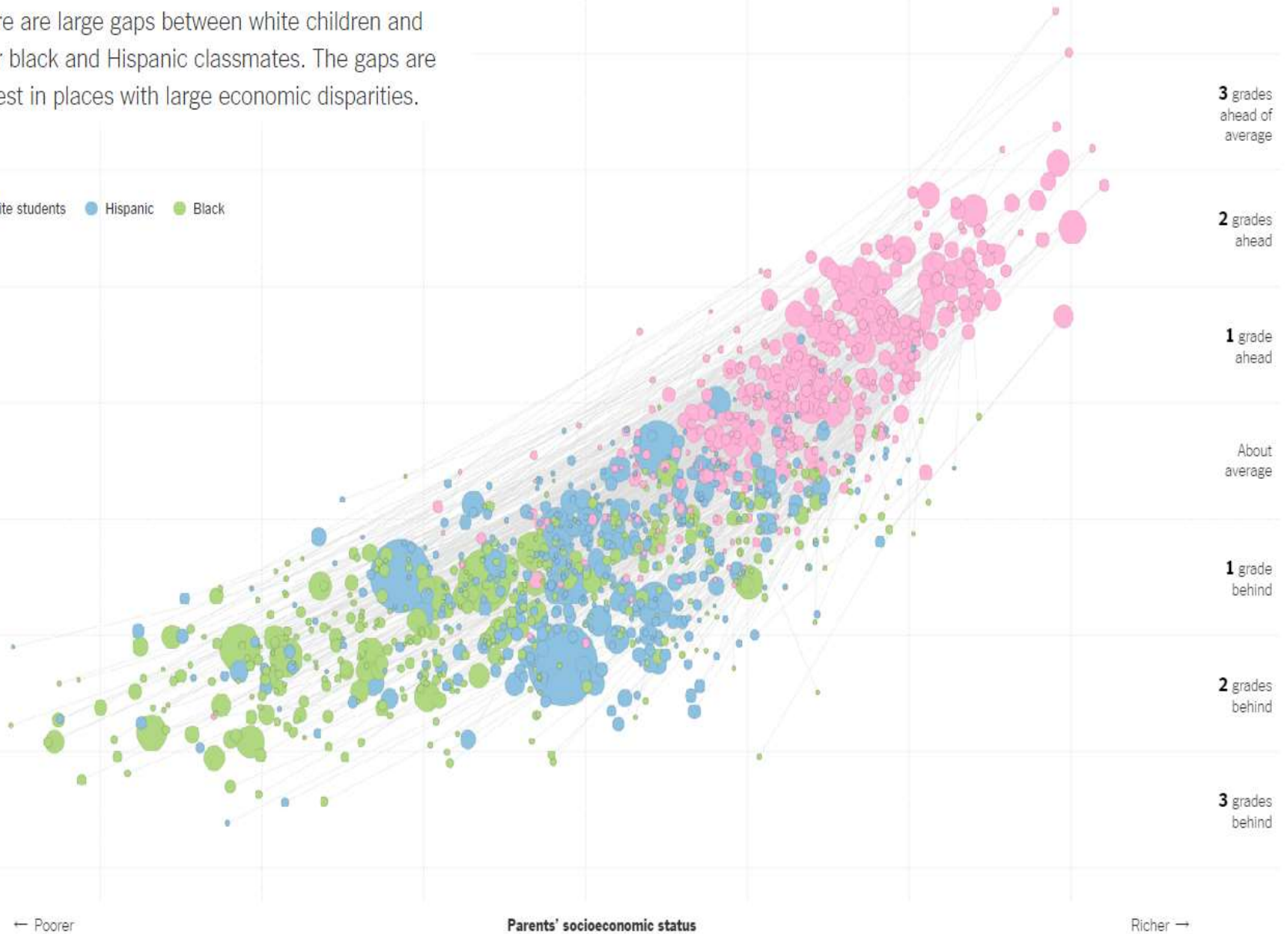
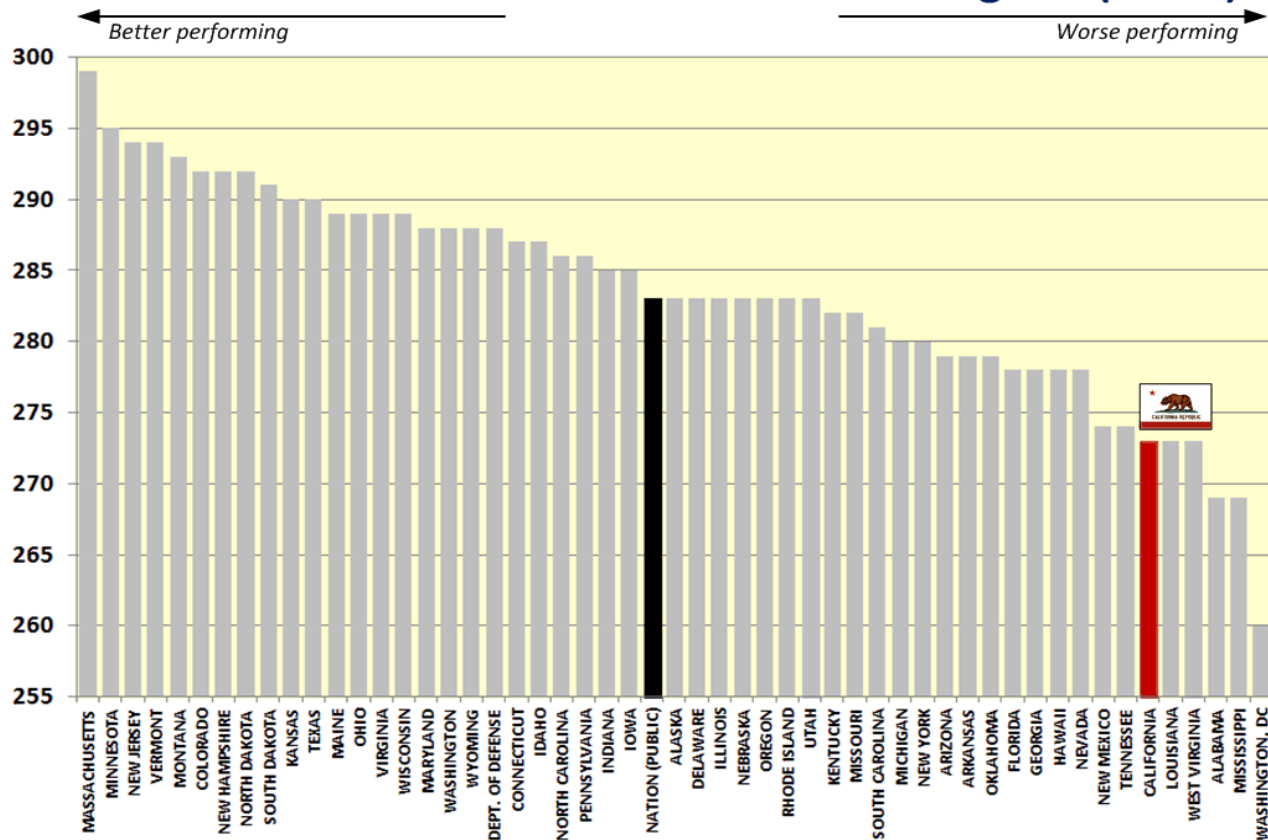


Chart shows districts with at least 100 white, 100 black and 100 Hispanic students per grade. Reliable estimates are not available for Asian-Americans.

# CA Compared to Other States in 8<sup>th</sup> Grade Math (NAEP)

## California Compared to Other States in 8<sup>th</sup>-grade Math 2011 National Assessment of Educational Progress (NAEP)

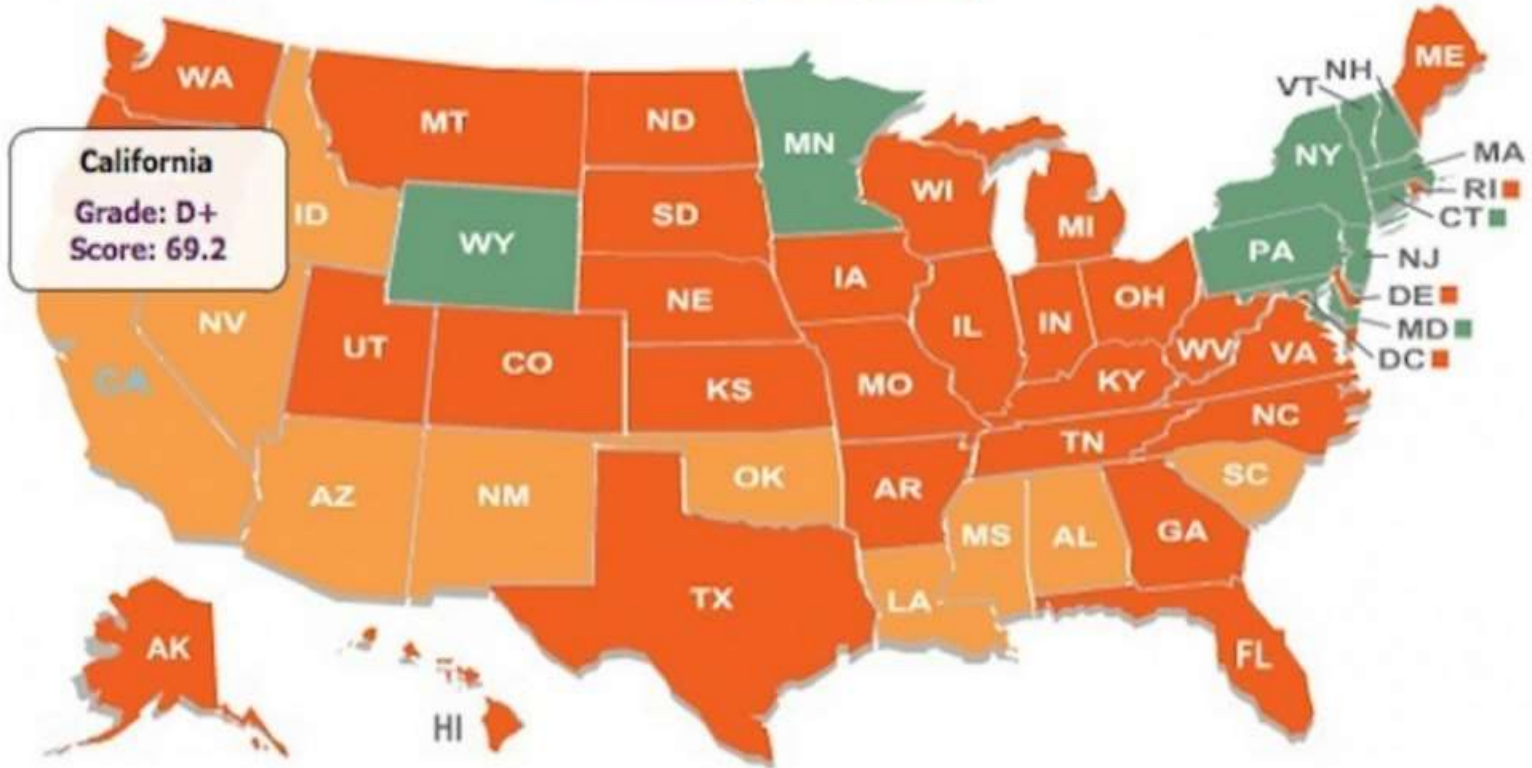


Sources:

U.S. Department of Education, Institute of Education Sciences: "Mathematics 2011: National Assessment of Education Progress at Grades 4 and 8," Table 13, page 48, PDF page 50.  
<http://nces.ed.gov/nationsreportcard/pubs/dst2011/2012452.asp>

# Overall Grades & Scores (2013)

U.S. Average: C (74.3)



**California**  
Grade: D+  
Score: 69.2

## California

**D+ (69.2)**

Chance for Success: C (72.8)

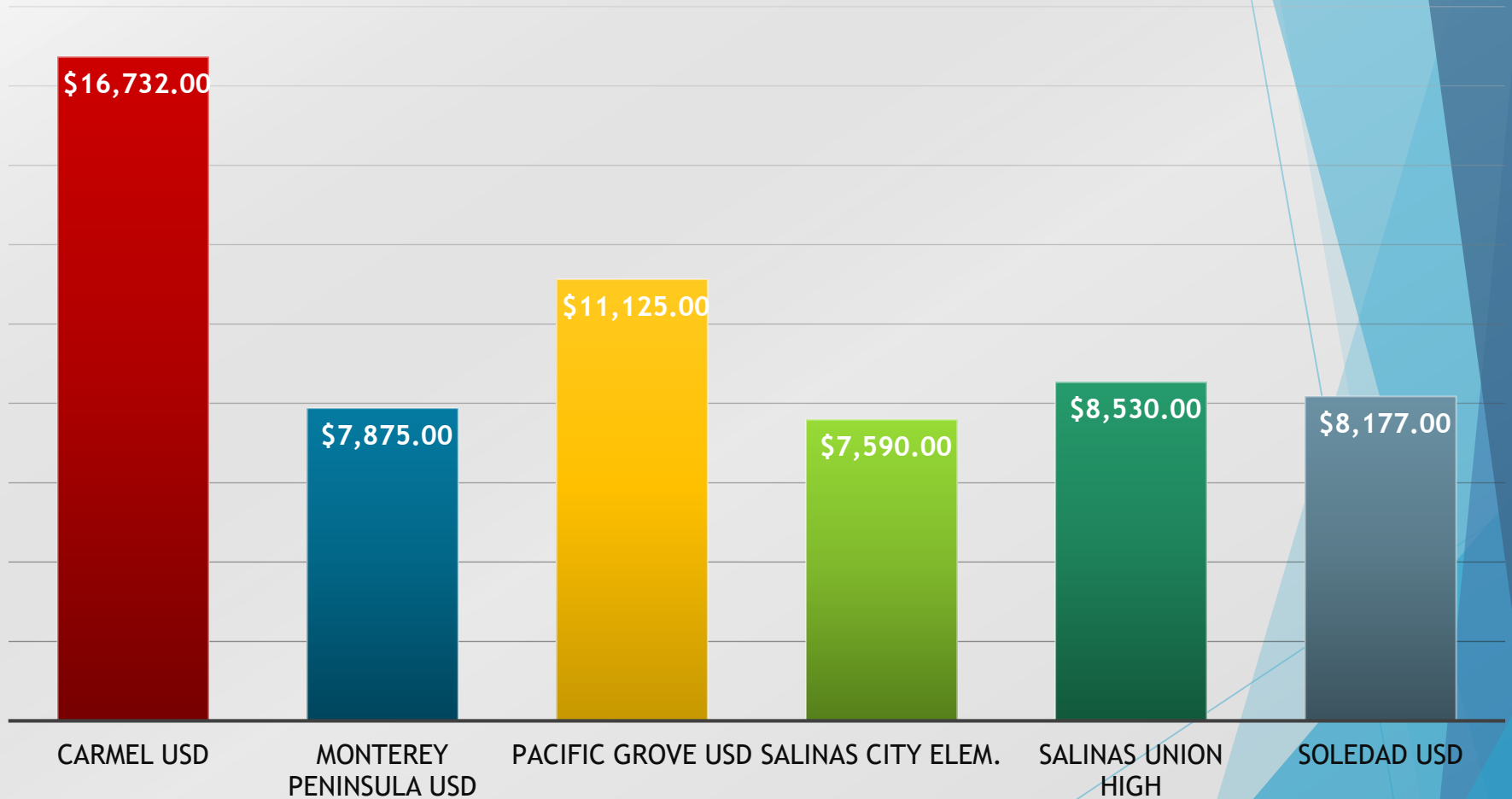
Early foundations: C- (71.9)

School years: C (72.6)

Adult outcomes: C (74.5)



## 2014-15 Monterey County School District Per Student Funding Under LCFF



# Re-Imagining Teaching and Learning



Providing a dynamic, **WORLD CLASS** education for **every** MPUSD student...

... We want to prepare **every** student to **change the world!**



# World Class Schools: Giving Families Strong Choice

Monterey Learning  
Community

Seaside Learning  
Community

Marina Learning  
Community



New Tech Network

---

---

The logo for Early College Designs. It features the text 'Early College Designs' in yellow on a dark blue background. Below the text is a small circular icon with a stylized figure.

JOBS FOR THE FUTURE

***Proof Points of Success in the US and Abroad.  
Quality for ALL students.***

# Why These Models?

- 1. National and internationally recognized for quality**
- 2. Proof points of success with results to back this up**
- 3. Reinventing wheel takes time; sense of urgency is now**

# World Class Schools of Choice

Seaside Learning  
Community

Founded in 1996, gets better each year

**Nationally recognized for quality**

Smart design; lots of support

**New Tech: 175 schools, 28 states**

**Culinary, Hospitality, and Patient Care  
Pathways at our Alternative Education  
School of Choice**



New Tech Network

***NTN Schools in US, China, and Australia.  
Project-Based Learning.***

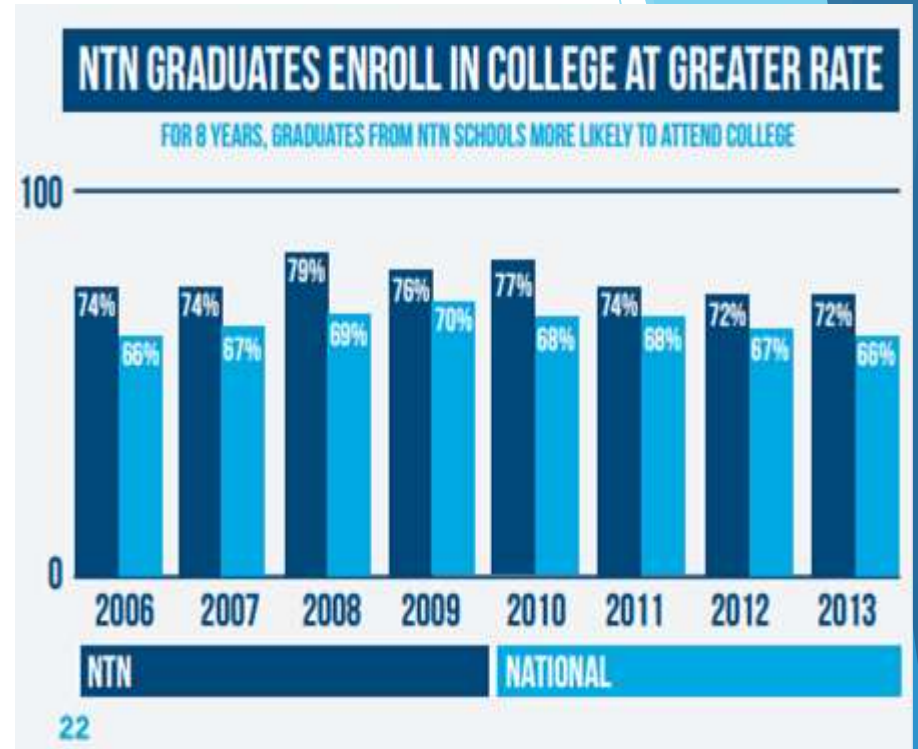
# Why New Tech Network and PBL?

## PBL and Special Populations:

**PBL** directly impacts attendance of socioeconomically disadvantaged students because the work is relevant to their lives (C. Keeghan, 2015)

**PBL** enables the teacher to empower ELLs to use their academic language and receive useful feedback (Asan & Haliloglu, 2011)

**PBL** leads to higher engagement levels in English Learners (Moss, 1998)



Source: New Tech Network, 2015

# World Class Schools of Choice

**Early College  
6-12**

**Nationally recognized for quality**

**Students earn college credit and even AA degree**

**230 Early College High Schools, 28 states, serving 50,000 students**



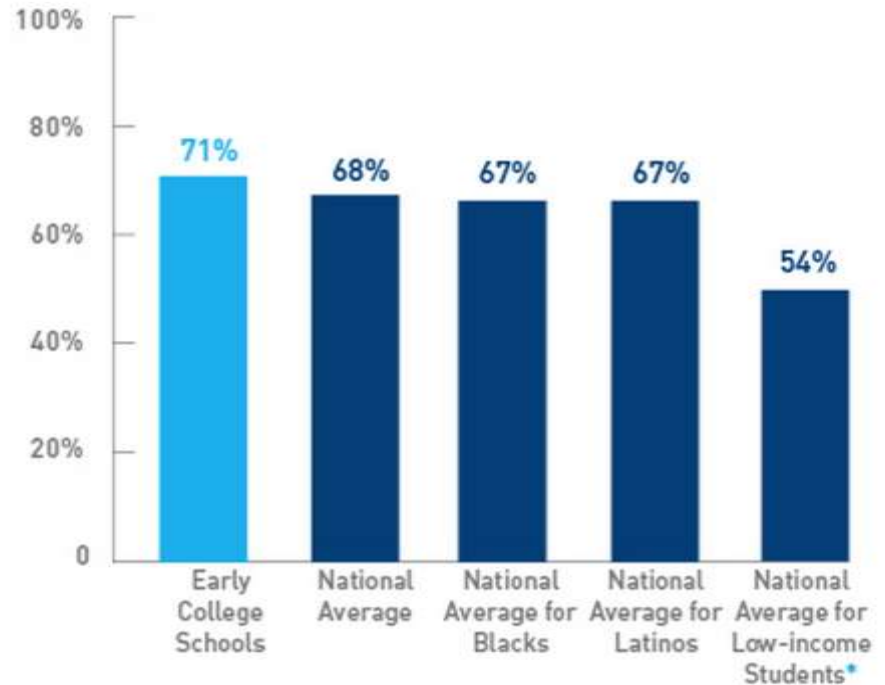
***Proof Points of Success in the US.  
College credit for ALL students.***

# Early College Scholars Outperforming Their Peers

By 2018, 61% of the jobs in California will require postsecondary education.

*-The Georgetown University Center on Education and workforce*

PERCENT OF GRADUATES ENROLLING IN COLLEGE IMMEDIATELY AFTER HIGH SCHOOL



\*Low-income students refers to the bottom 20 percent of all family incomes.  
SOURCES: Early College High School Initiative Student Information System, Jobs for the Future; National Student Clearinghouse; and U.S. Department of Commerce, Census Bureau

# Key finding: Early college students are more likely to earn substantial college credit in high school.

## College Credits Earned in High School



### Early College High Schools

94% of early college students earn college credit in high school

versus



### High Schools Nationwide

10% of high school students nationwide earn college credit in high school

Jobs for the Future—[www.jff.org](http://www.jff.org)

Key finding: 30% of Early College Scholars earn an Associate's Degree or other post secondary credential while in high school



# World Class Schools of Choice

**Middle Years  
Program  
and IBDP**

**Internationally recognized**

**Proof points of success for underserved**

**Teaches self-reflection and requires  
students to be self-directed**

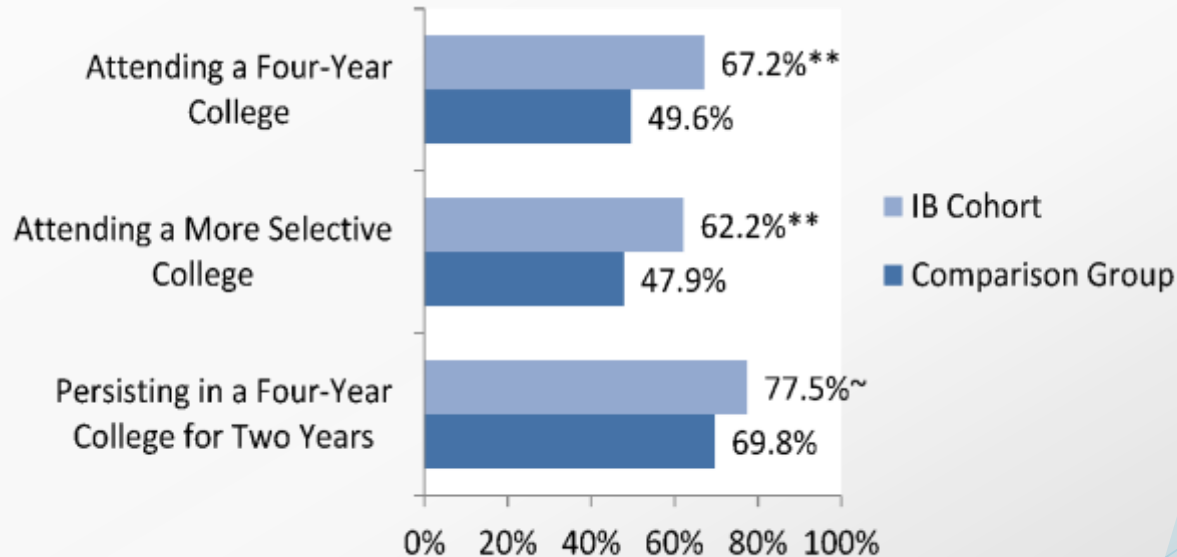
**4,335 IB and MYP schools in 143 countries  
(1,370 in US, 200+ in CA)**



***Proof Point of Success in the US and Abroad.  
Student-centered.***

# IB Data on College Access Improvement

Students enrolling in Pre-IB Diploma Program (MYP) in the 9<sup>th</sup> grade, regardless of their persistence in the program, showed improved access to college.



\*\* =  $p$ -value < 0.01, \* =  $p$ -value < 0.05, ~ =  $p$ -value < 0.10

Coca, V., D. Johnson, and T. Kelley-Kemple (2011). Working to My Potential: The Postsecondary Experiences of CPS Students in the International Baccalaureate Diploma Programme. University of Chicago Consortium on Chicago School Research, Chicago.

# Next Steps

- ▶ New Tech Network launches 2016-17 at Seaside Middle and Seaside High (8<sup>th</sup> and 9<sup>th</sup> grade)
- ▶ IB planning year at Colton and Monterey High
- ▶ Early College planning year at Los Arboles and Marina High
- ▶ 2017-18 School Year—All Models in Operation

# How Can you Help?

- ▶ Direct Support
  - ▶ Internships
  - ▶ Class visits
  - ▶ Summer opportunities
- ▶ Strategic Support
  - ▶ Serve on Advisory Committee
  - ▶ Connections to individuals who can help
- ▶ Financial Support
  - ▶ One to One Computing/Wireless network in Seaside
  - ▶ Post Secondary Partnership (MIIS, MPC, CSUMB)
  - ▶ College Tuition/Scholarships